

# Intro to Using Web Maps in your Classroom

---

COLONIAL SCHOOL DISTRICT INSTRUCTIONAL TECHNOLOGY NIGHT

# Tonight's Agenda

---

- Introductions
- 4:30 – 4:45: What is GIS and why do I want to use this in my classroom?
- 4:45 – 5:05: Hands-On – ArcGIS Online 5 x 5 Lessons
- 5:05 – 5:20: Where do I find data for maps?
- 5:20 – 5:40: Let's get some ideas!
- 5:40 – 6:20: Let's do something!
- 6:20 – 6:30: What's Next?

# Introductions

---

- Miriam Pomilio  
Principal Planner/GIS Coordination  
Office of State Planning Coordination
- Kymberlie Kelly  
Instructor - Civil Engineering Technology  
Delaware Technical and Community College
- Dave Braig  
GIS Project Manager  
JMT Technologies Group

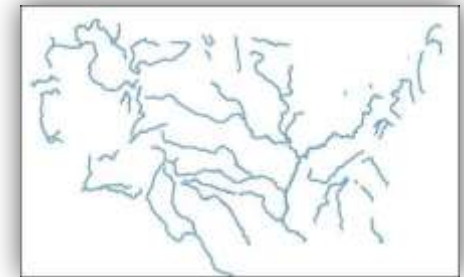
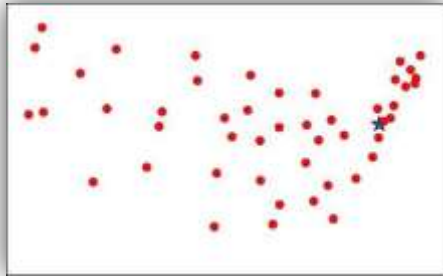
# Think about the world outside

---



Things here are not always like things over there...

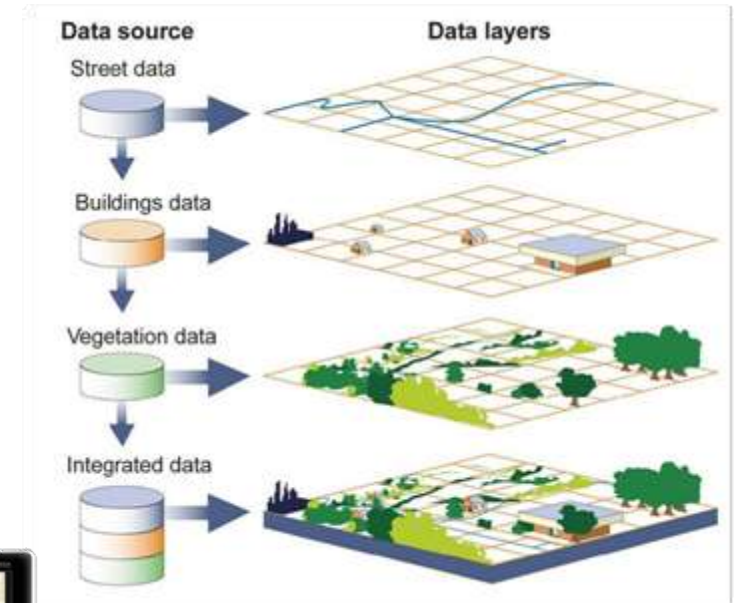
# Maps use layers of “like things”



# So What is GIS?

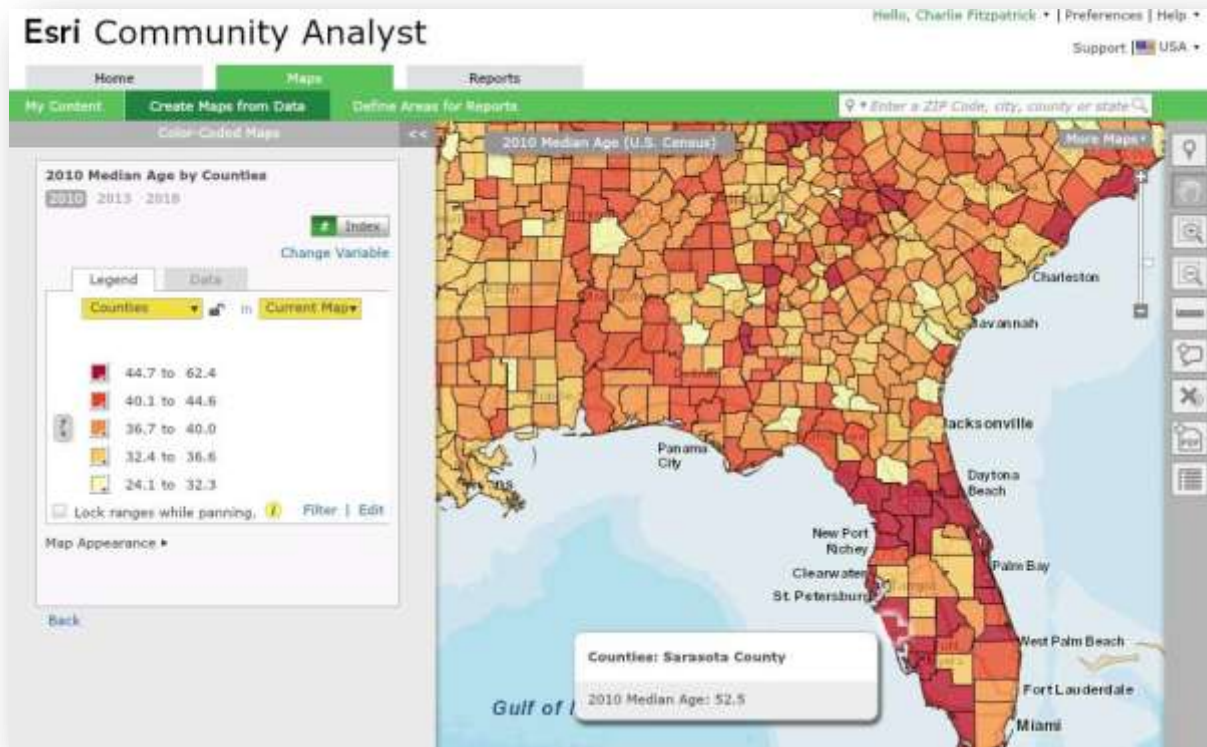
Geographic Information System =

- Information about the world
- Shown as layers of points, lines, area, & images
- For a range of scales
- Viewed and analyzed on a computer





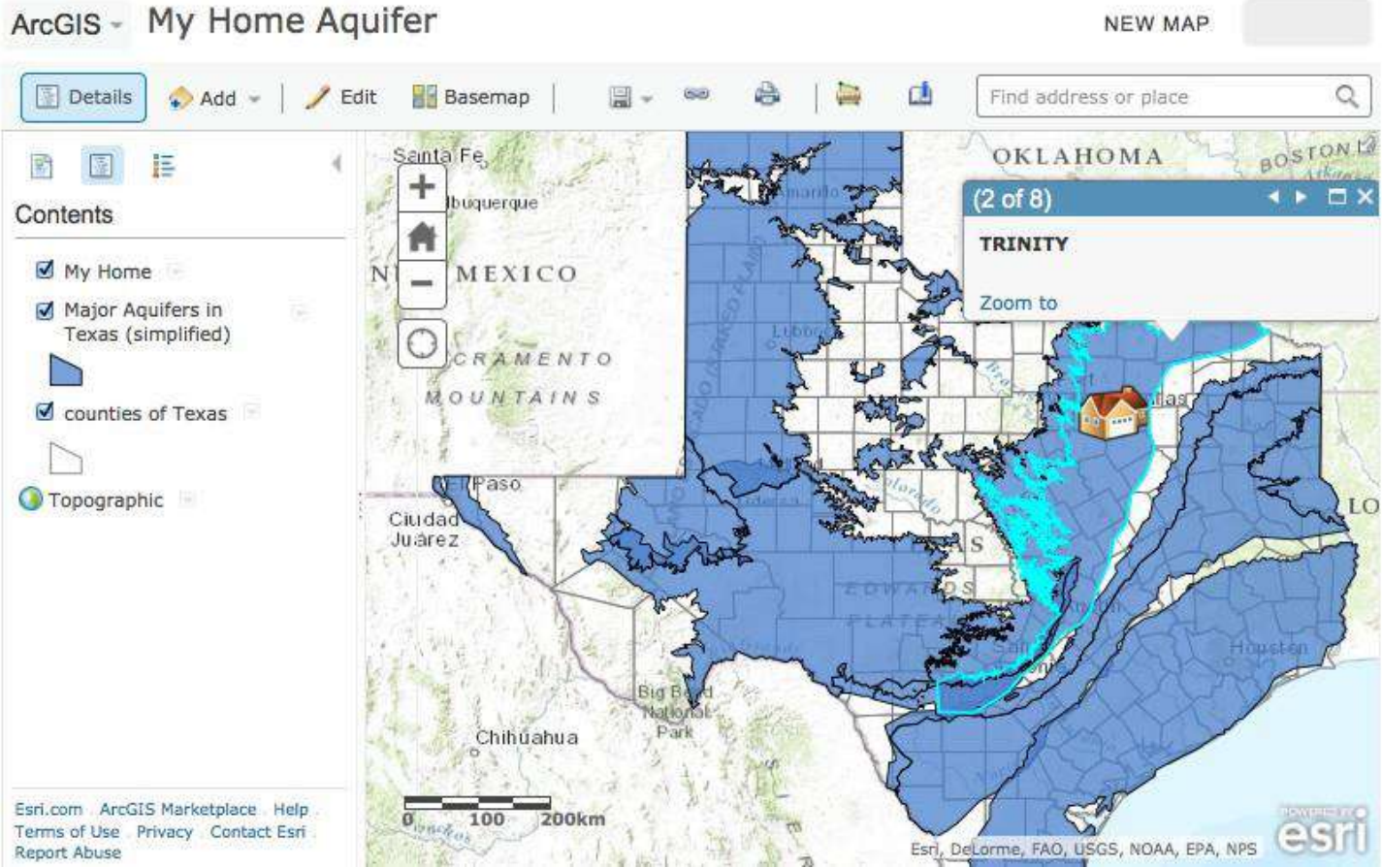
# Analysis is the essential element



Allows us to ask questions of the map...

- What is relationship between average income, book sales, and voting patterns within a city?
- How many doctors are in different areas compared to the population?
- What areas of a city have higher crime rates, and when, so I can assign the police to right areas at the right times?
- What is the closet restaurant to where I am right now?

# Integrate layers from different sources

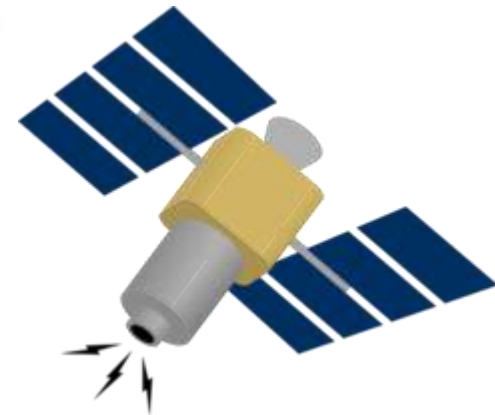
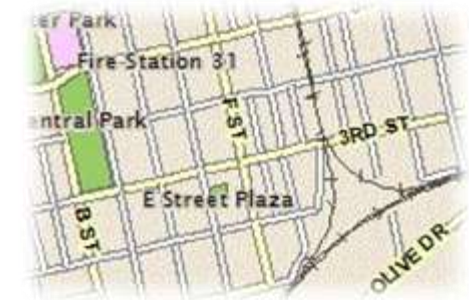




# Geotechnologies

---

- GIS = Geographic Information Systems
- GPS = Global Positioning Systems
- RS = Remote Sensing



# Mix and match Technologies

---



# Who uses GIS?

---

## Aid and Development

- Humanitarian Aid
- Sustainable Development

## Business

- Insurance
- Retail
- Manufacturing
- Real Estate
- Banking
- Marketing
- Media
- Supply Chain

## Defense and Intelligence

- Military Operations
- Intelligence
- Installations and Environment
- The Geospatially Enabled Enterprise

## Education

- Libraries and Museums
- Schools (K–12)
- Universities and Community Colleges

## Health and Human Services

- Public Health
- Human Services
- Hospital and Health Systems
- Geomedicine

## Mapping and Charting

- Aeronautical
- Cartographic
- Nautical
- Topographic

## Natural Resources

- Agriculture
- Climate Change
- Conservation
- Environmental Management
- Forestry
- Mining
- Oceans
- Petroleum
- Water Resources

## Public Safety

- Emergency Call Taking and Dispatch
- Emergency/Disaster Management
- Fire, Rescue, and EMS
- Homeland/National Security
- Law Enforcement
- Wildland Fire Management

## Transportation

- Aviation
- Highways
- Logistics
- Railways
- Ports and Maritime
- Public Transit

## Utilities and Communications

- Electric
- Gas
- Location-Based Services
- Pipeline
- Telecommunications
- Water/Wastewater